

Penguin Performance Plan

Students needing redirection will follow these steps:

Step 1: Reminder and reteach expectation

Step 2: Take a break (in classroom)

Step 3: Take a break in buddy room

Step 4: Teacher and/or student will contact parent/guardian

Positive Motivators

- Fish Tickets
- Fish of the Week
- Penguin Family members in classrooms showing great hallway behavior
- Grade-level rewards

PBIS

Positive Behavior Interventions
& Supports

Gibbs Students are



Created by
Gibbs Elementary
PBIS Team

George W. Gibbs Jr. Elementary

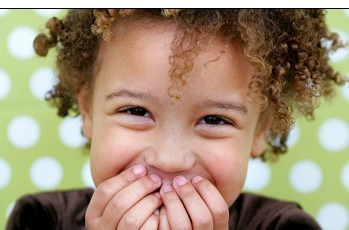
Behavior Expectations

- *Respectful
- *Responsible
- *Safe



VOICE LEVELS

- 0 - Silent
- 1 - Whisper
- 2 - Conversation
- 3 - Outdoor Voice



What is PBIS?

- PBIS aims to build effective environments in which positive behavior is more effective than problem behavior.
- PBIS is a collaborative, assessment-based approach to developing interventions for problem behavior.

- PBIS emphasizes the use of preventative teaching and reinforcement-based strategies to achieve meaningful and durable behavior and lifestyle outcomes.
- PBIS is a school-wide system of rewards & consequences.
- PBIS includes three specific school-wide expectations:
 - *Respectful
 - *Responsible
 - *Safe

Level 1

A Level 1 is written when a student needs to be retaught an appropriate behavior multiple times, and it is used by staff to recognize patterns of student behavior.

Level 2

A Level 2 is written when a student displays highly inappropriate or dangerous behavior that has a severe impact on the classroom or learning environment.

Level 2 violations require administrative/office intervention.